



Model Dimensions

Letter J	mm	inch
Width	100	3.9
Height	150	5.9
Depth	40	1.6

Papers needed

A4 or Letter sized paper (180 - 240 gsm)

Alphabet	Sheets
J	2


Designer

Watabe Tetsuya

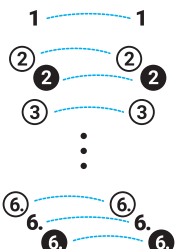
Website: <https://kamimodel.com>

Symbols and Notation

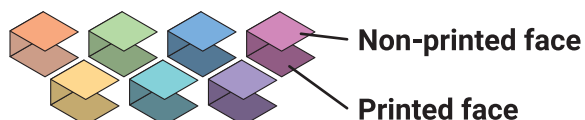
Template

Cut Mountain fold Valley fold Glue the Non-printed face Glue the Printed face 

Glue in numerical order



Instruction



Tools & Materials

- Paper (The number of papers you need is written on the cover.)
- Printer
- Cutting tool (Craft knife, Utility knife, and Cutting mat ... or Cutting machine)
- Ruler
- Scoring tool (Butter knife, Dry ballpoint pen, Plastic knife, or other pointed tool)
- Round bar (Core of cling wrap, Rolling pin, Wine bottle, etc.)
- Glue (Glue suitable for paper, Quick drying wood glue (PVA), and Toothpicks)
- Tweezers

Tips for Assembly

Print the template

- Print model's PDF file out onto thicker paper, use paper with a thickness ranged between 180 to 240 gsm (gram per square meter).
- If you cannot print on black or thick paper, print on copy paper (80 gsm) and temporarily fix it on the paper.
- In this template, the printed side of most parts will be inside the finished model.

Score along the fold lines

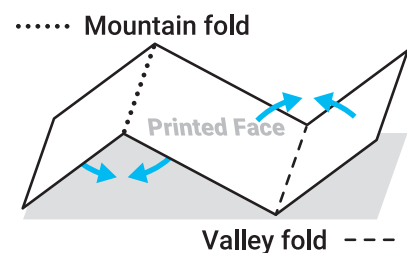
- Using a ruler as a guide, run the scoring tool firmly along all the broken lines and the dotted lines.

Cut

- First cut the paper into parts and then carefully cut out along the contour line.

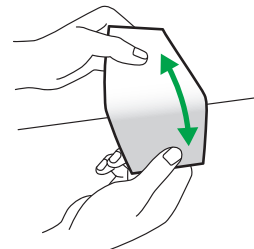
Fold

- Mountain fold: Fold downwards along the dotted line so that the line is on the outside of the fold.
- Valley fold: Fold upwards along the broken line so that the line is on the inside of the fold.



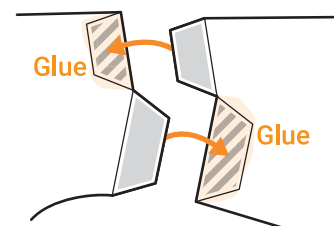
Curl

- Curl round part before gluing. You can wrap the paper around a round bar and curl it. Alternatively, you can curl paper by rubbing it on the edge of a table.

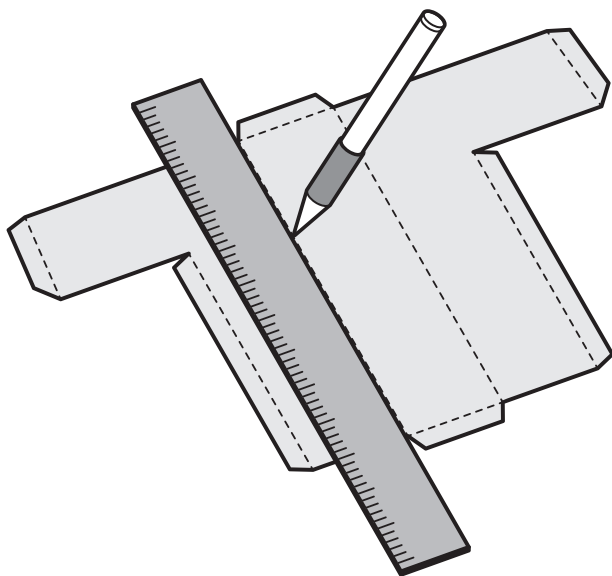


Glue

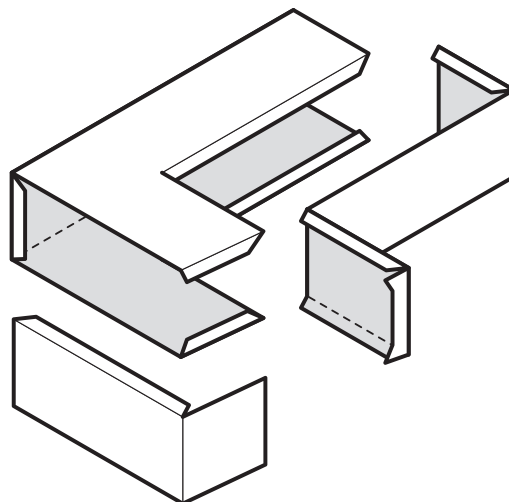
- Before you use glue, make sure you are joining the two parts correctly.
- Then put glue onto the printed face of hatched area.
- Use glue sparingly. Try spreading the glue every with an extra piece of paper or a toothpick.



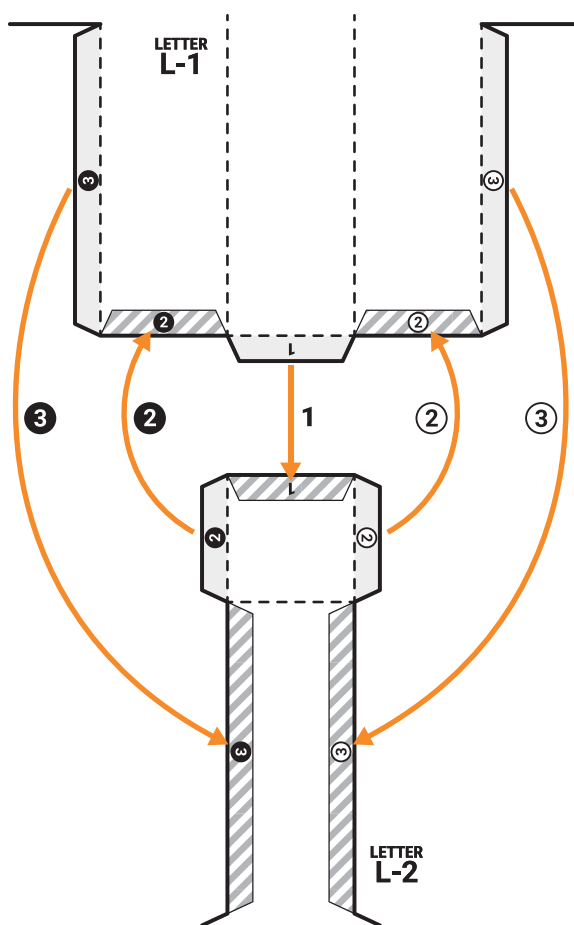
1 Score along the fold lines



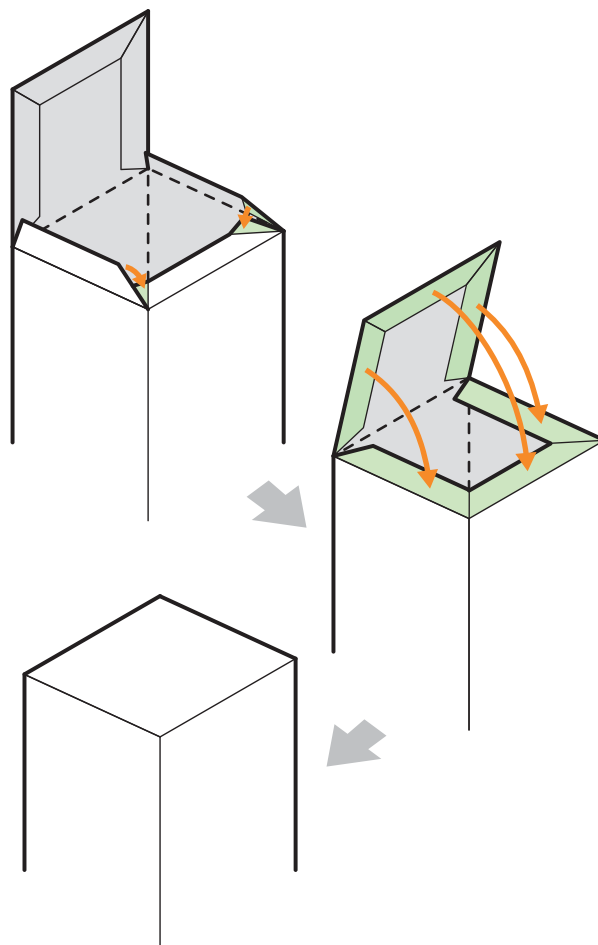
2 Place in the right position



3 Glue in numerical order



4 Close the box



J

